

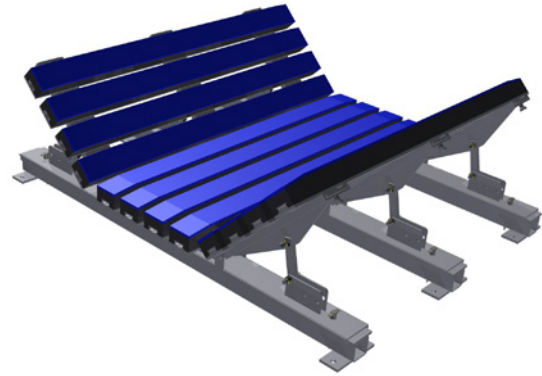
# Impact Beds

PRODUCT  
FACT  
SHEET

The TS Global range of impact beds are designed to be installed below the conveyor loading zones and absorb impact forces applied onto the belt via the transfer of product from one conveyor to another. The dampening of these forces minimises the potential risk of damage to the conveyor belt. Our robust units are custom designed for each application and are suitable for use in high impact areas. Manufactured from stainless steel or mild steel (finished with galvanised coating), our units balance cost effectiveness with long-life functionality making this the ideal choice for your application.

## Application

Suitable for any impact zone



-  Proven Performance
-  Quality Product
-  Flexibility in Design
-  On-time Delivery

FEATURES	BENEFITS
Adjustable trough angle	= Can be site adjusted between 35-45 degrees
Innovative modular design	= Allows for impact bars to be retracted to both sides of the conveyor for maintenance
	= Can be handled in small parts minimising manual handling
Robust design	= Increases longevity
	= Optimises performance
Unit welded to AS/NZS – 1554.1 and galvanised	= Increase longevity
	= Optimises performance
Available in various lengths	= Flexible to meet site needs
Impact bars manufactured from UHMWPE with lead-in/lead-out chamfer	= Reduces wear and impact damage to belt
	= Increases life of impact slide bars
	= Reduces belt drag, increasing efficiency
Supports conveyor belt in loading zone	= Provides improved surface for skirts to seal against, minimising fugitive dust impacting on the environment
	= Minimises clean-up around the conveyor loading area

# Impact Beds

PRODUCT  
FACT  
SHEET



Please contact TS Global for part number, length and weight.

DISTRIBUTED BY

## **TS**Global®

Leaders in Conveyor Products

PO Box 103, HRMC NSW 2300  
8 Laurio Place, Mayfield NSW 2304

**PHONE** +61 2 4968 8500  
**EMAIL** [sales@tsglobal.net.au](mailto:sales@tsglobal.net.au)  
**WEB** [www.tsglobal.net.au](http://www.tsglobal.net.au)

ABN 30 603 644 748