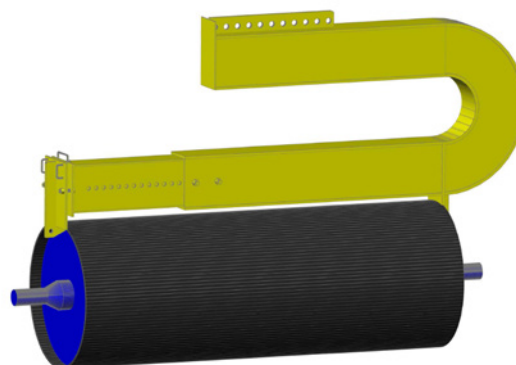


Pulley Lifting Beam

PRODUCT
FACT
SHEET

The TS Global pulley lifting beam has been designed to assist in the safe handling of conveyor pulleys. The pulley lifting beam comes in 4.5T, 6T, and 12T variants. Its multi-hole telescoping rail system can be adjusted to suit any face length between 1000mm to 2500mm. The lifting beam allows you to balance the lift and remove the pulley in difficult situations in a safe and efficient manner. Balancing cost effectiveness with long life functionality makes this the ideal choice for your application.



Application

Model/SWL	Typical Belt Width (mm)	Face Width (mm)
Small/4.5 Tonne	900mm – 1500mm	Suits pulley face width of 1000mm-1650mm
Medium/6 Tonne	1500mm – 1800mm	Suits pulley face width 1650mm-2000mm
Large/12 Tonne	1700mm – 2300mm	Suits pulley face width 1800mm-2500mm

Custom sizes available upon request.

-  **Proven Performance**
-  **Quality Product**
-  **Flexibility in Design**
-  **On-time Delivery**

FEATURES

BENEFITS

Multi hole rail system

- = Flexible in difficult situations increasing safety and efficiency
- = Allows the pulley lift to be balanced for safe removal
- = Can be adjusted to suit a range of pulley faces

Available in a range of load ratings

- = Ensures the correct unit is used for the lift

Compact design

- = Fits into tight applications

C shape design

- = Allows pulley to be removed without the removal of belt
- = Assists in getting lifting point directly over the centre of the pulley

Secondary safety chains

- = Provides a secondary safety device to reduce risks

TSGlobal[®]

Leaders in Conveyor Products

Pulley Lifting Beam

PRODUCT
FACT
SHEET



Please contact TS Global for part number, length and weight.

DISTRIBUTED BY

TSGlobal®

Leaders in Conveyor Products

PO Box 103, HRMC NSW 2300
8 Laurio Place, Mayfield NSW 2304

PHONE +61 2 4968 8500

EMAIL sales@tsglobal.net.au

WEB www.tsglobal.net.au

ABN 30 603 644 748