

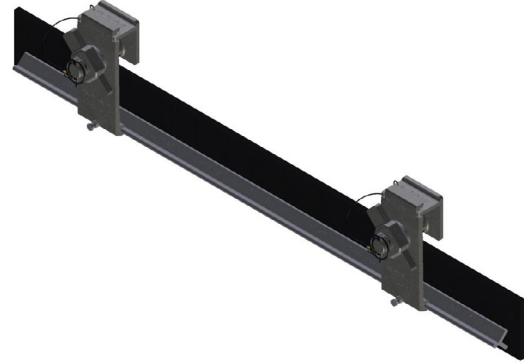
TuffClamp Skirt System

PRODUCT
FACT
SHEET

The range of TS Global skirting systems ensures maximum retention of dust and product within the transfer chute reducing safety hazards and environmental impact around the conveyor.

This is achieved by ensuring that the structural steel of the transfer chute remains clear of the belt, reducing the possibility of belt damage through gouging, while the skirt rubber seals the transfer.

Balancing cost effectiveness with long life functionality makes this the ideal choice for your application.



Application

All conveyor loading areas.

-  Proven Performance
-  Quality Product
-  Flexibility in Design
-  On-time Delivery

FEATURES	BENEFITS
Manufactured from high grade stainless steel	= Increases longevity in structural components
Designed and supplied as individual components	= Allows easier access into tight fitting areas = Reduces manual handling hazards
Mechanical screw up adjusters	= Positive clamping into the soft skirt rubber to ensure retention
Manufactured with acme threaded adjusters	= Prevents seizing
Clamps are designed to interlock with the clamp rail	= Ensures clamps will not vibrate loose, eliminating the possibility of the rail dropping down and damaging the belt
Dimpled skirt rail	= Superior clamping force which improves rubber retention
Flexibility in positioning of clamps to avoid chute obstructions	= Faster installation = Reduces safety hazards
Can accommodate between 10mm and 19mm thick skirt rubber	= A standardised system can be used across your site with varying rubber thicknesses

*TS Global can also supply a full range of skirting rubber

TuffClamp Skirt System

PRODUCT
FACT
SHEET



Item Code	Description	Unit	Overall Length		Weight	
			(mm)	(inches)	(kg)	(lbs)
30-10-001	Skirting, TuffClamp system	Each	1000	39 3/8	6	14
30-11-001	Skirting, TuffClamp system - low profile	Each	1000	39 3/8	6	13

For more information, please contact TS Global directly and/or your TS Global product distributor.

DISTRIBUTED BY

TS Global

Conveyor & Polyurethane Specialists

WA OFFICE
Welshpool WA

NSW OFFICE
Tomago NSW

QLD OFFICE
Emerald QLD

ABN 30 603 644 748