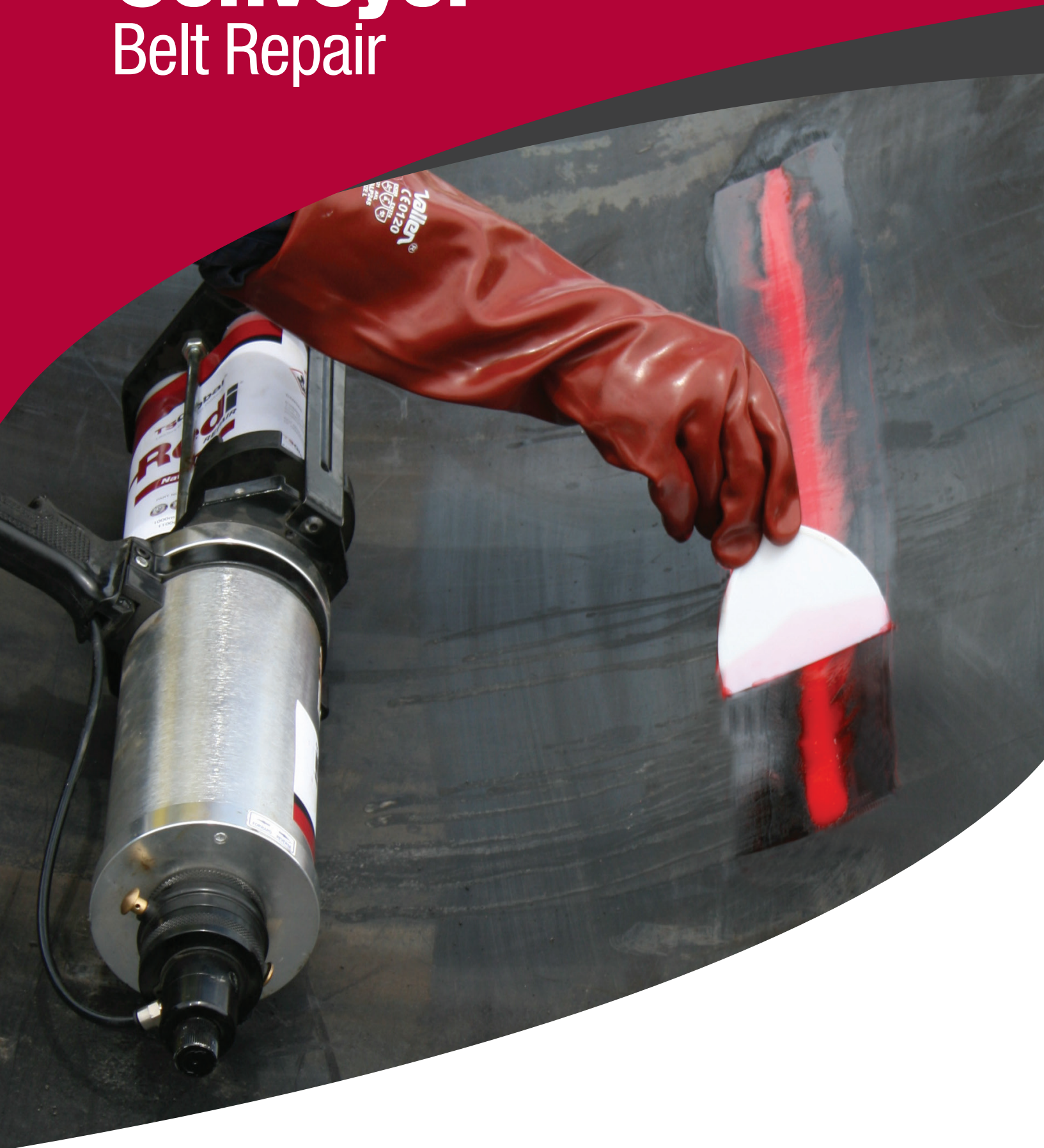


Conveyor Belt Repair



TSGlobal®
Conveyor & Polyurethane Specialists



With more than two decades of experience, TS Global is a proudly Australian-owned company that specialises in producing a diverse array of premium-grade conveyor accessories and polyurethane components. We boast an exceptional team of engineers and manufacturers who possess the skills and expertise to create cutting-edge solutions that can withstand even the most challenging conditions.

Our range of Redi Repair products provide a simple, cost effective and fast curing solution to repairing a damaged or torn conveyor belt. Redi Repair products can be used to repair:

- Skirt-Line Wear
- Punctures/Holes
- Split Belt/Tears
- Edge Damage Including Shark Bite



Proven Performance



Quality Product



Flexibility in Design



On-time Delivery



REDI REPAIR NATURAL 85

Redi Repair Natural 85 is a two part, 100% solids polyurethane compound suitable for repairs to rubber (fabric and steel cord) and PVC (solid woven) conveyor belts. Redi Repair is applied with either our manual or pneumatic caulking gun and static mixing nozzle, ensuring the product is thoroughly mixed at the correct ratio. Once applied to the conveyor belt, it has a working time of 10-15 minutes (at 24°C). The high viscosity of Redi Repair N85, allows it to be applied on incline conveyors or conveyor belt troughs up to 45° without sagging or slumping. This fast curing product, provides an engineered grade bond, increasing the life of the belt with minimal downtime.

Colour: Red	Hardness: 80-85A
Shrinkage: <1%	Shelf Life: 12 Months @ 22°C
Working Time: 10-15 minutes @ 24°C	Return Belt to Service: 4 hours @ 24°C



REDI REPAIR CLEANING SOLUTION & PRIMER

Our range of cleaning solution and primer have been specially formulated to ensure an engineering grade bond can be achieved between the parent conveyor belt and Redi Repair N85.

Cleaning Solution N85	Rubber & PVC
Primer N85	Rubber & PVC
Working Time: 10-15 minutes @ 24°C	Return Belt to Service: 4 hours @ 24°C





ACCESSORIES

We supply a range of accessories to assist with the safe and efficient application of the Redi Repair N85 product range. They assist in avoiding air entrapment, improve mixing reliability, minimise waste and increase productivity. The range includes:

- Battery Caulking Guns
- Pneumatic Caulking Guns
- Static Mixing Nozzles
- Steel Scrapers
- Plastic Scrapers



SKIRT LINE DAMAGE/IMPACT DAMAGE

1. **Prepare surface** – Cut away any damage and buff out the repair area with a wire wheel. Ensure a rounded profile (no sharp corners) in the rubber is produced as per figure 1.
2. **Clean the surface** – Use a banister brush to removal rubber dust. Wipe prepared surface with Redi Repair cleaning solution and a clean rag.
3. **Prime the surface** – Using a paint brush apply a single coating of Redi Repair primer to the entire prepped surface. Allow 5 minutes to dry.
4. **Repair the surface** – Once Redi Repair primer has dried, fill the repair area using the Redi Repair N85 conveyor repair material.
5. **Finish the surface** – Use the scraper to smooth out and level the material to the repair area (as per figure 2) and feather out the edges. No need to buff once completed.

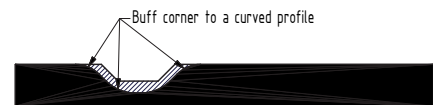
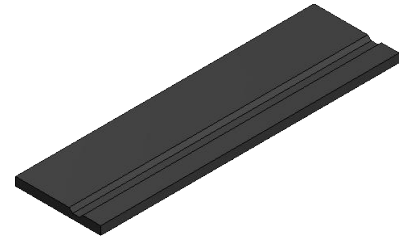


FIGURE 1



FIGURE 2

PUNCTURES/HOLES

1. **Prepare surface** – Trim jagged edge of hole back to a clean surface as shown in figure 3 (bevelled edge). Grind out the repair area with a wire wheel. Ensure a profile in the rubber is produced as per figure 4.
2. **Clean the surface** – Use a banister brush to removal rubber dust. Wipe prepared surface with Redi Repair cleaning solution and a clean rag.
3. **Prime the surface** – Using a paint brush apply a single coating of Redi Repair primer to the entire prepped surface. Allow 5 minutes to dry.
4. **Repair the surface** – Once primer has dried secure a backing plate of tape, aluminium or similar (wax surface) as per figure 4. Fill the repair area using the Redi Repair N85 conveyor repair material
5. **Finish the surface** – Use the scraper to smooth out and level the material to the repair area (as per figure 5) and feather out the edges. No need to buff once completed.

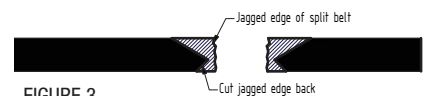
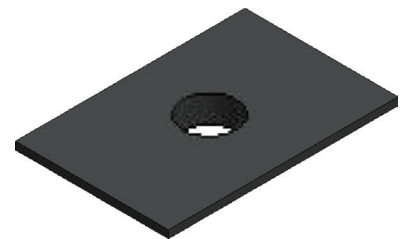


FIGURE 3

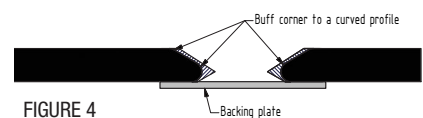


FIGURE 4



FIGURE 5

SPLIT BELT

1. **Prepare surface** – Trim jagged edges of split back to a clean surface as shown in per figure 6 (bevelled edge). Grind out the repair area with a wire wheel. Ensure a profile in the rubber is produced as per figure 7.
2. **Clean the surface** – Use a banister brush to removal rubber dust. Wipe prepared surface with Redi Repair cleaning solution and a clean rag.
3. **Prime the surface** – Using a paint brush apply a single coating of Redi Repair primer to the entire prepped surface. Allow 5 minutes to dry.
4. **Repair the surface** – Once primer has dried secure a backing plate of tape, aluminium or similar (wax surface) as per figure 7. Fill the repair area using the Redi Repair N85 conveyor repair material
5. **Finish the surface** – Use the scraper to smooth out and level the material to the repair area (as per figure 8) and feather out the edges. No need to buff once completed.

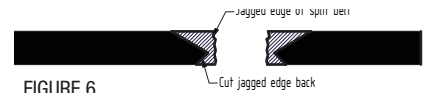
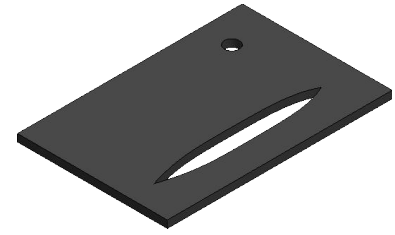


FIGURE 6

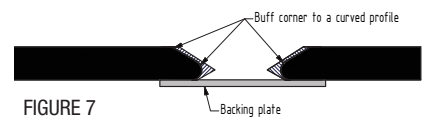


FIGURE 7



FIGURE 8

EDGE DAMAGE

1. **Prepare surface** – Trim jagged edges from belt back to a clean surface as shown in per figure 9 (bevelled edge). Grind out the repair area with a wire brush/wheel. Ensure a profile in the rubber is produced as per figure 10.
2. **Clean the surface** – Use a banister brush to removal rubber dust. Wipe prepared surface with Redi Repair cleaning solution and a clean rag.
3. **Prime the surface** – Using a paint brush apply a single coating of Redi Repair primer to the entire prepped surface. Allow 5 minutes to dry
4. **Repair the surface** – Once primer has dried clamp an angle of aluminium or similar (wax surface) to the belt edge as per figure 11. Fill the repair area using the Redi Repair N85 conveyor repair material.
5. **Finish the surface** – Use the scraper to smooth out and level the material to the repair area (as per figure 11) and feather out the edges. No need to buff once completed.

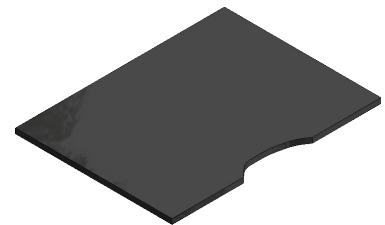


FIGURE 9



FIGURE 10



FIGURE 11



Redi Repair Parts

REDI REPAIR PARTS TABLE

Description	Part Number
Redi Repair N85 Complete Kit	60-13-100
Redi Repair Manual Caulking Gun	60-13-171
Redi Repair Battery Caulking Gun	60-13-1168
Redi Repair Pneumatic Calking Gun	60-13-170
Redi Repair Steel Scraper 250mm	60-13-173
Redi Repair Plastic Scraper 150mm	60-13-174
75mm Paint Brush 30mm bristle	60-13-175





TSGlobal®

Conveyor & Polyurethane Specialists

AS/NZS ISO 9001
AS/NZS ISO 45001

BUREAU VERITAS
Certification



PHONE 1300 418 298 • **EMAIL** sales@tsglobal.net.au • **WEB** www.tsglobal.net.au
WELSHPOOL WA • **TOMAGO NSW** • **EMERALD QLD** • **MACKAY QLD**

ABN 30 603 644 748

